



HUNTERS[®]

HERE TO GET *you* THERE



The Hermitage, School Hill, Lower Heswall,
CH60 0DP
£210,000



Hunters are pleased to offer to the market, this well presented first floor apartment.

Viewing will be essential to appreciate the property which stands in manicured and well maintained communal gardens. There is also a garage accessed via School Hill.

The internal accommodation briefly comprises; hall, utility, 'L' shaped lounge/dining room, kitchen, bathroom and two bedrooms.

The Lease runs for the remainder of 999 years with a peppercorn ground rent.

The company accounts confirm that the Management Fees are £132 pcm.

339 Chester Road Little Sutton, Ellesmere Port, CH66 3RG | 01513392465
littlesutton@hunters.com | www.hunters.com

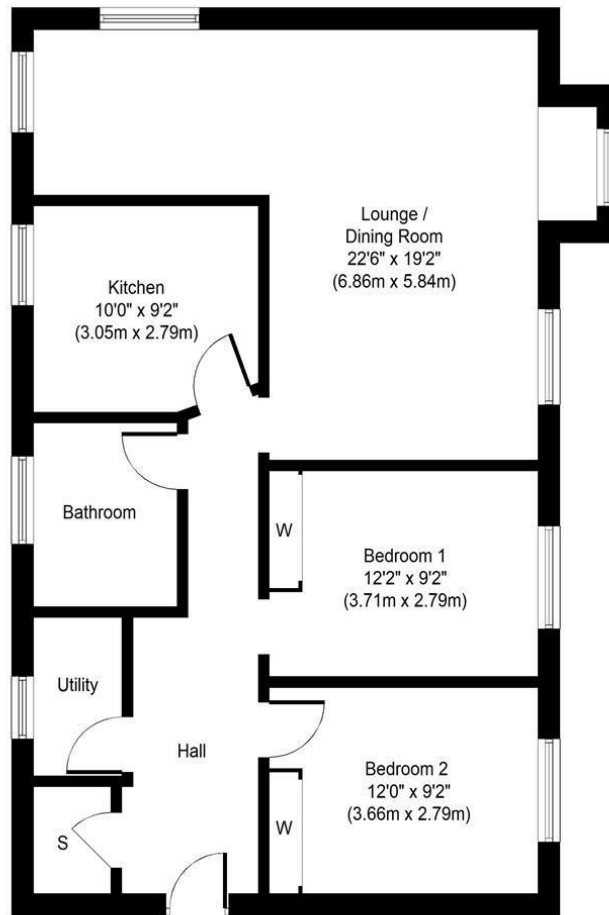


KEY FEATURES

- Residential First Floor Apartment
- Two Bedroom Accommodation
 - Fitted Kitchen
 - Central Heating
 - Fine Residential Position
- Manicured & Well Maintained Communal Gardens
 - Ample Visitor Parking & Garage
 - Viewing Highly Recommended







Approximate Floor Area
 879 Sq. ft.
 (81.7 Sq. m.)

Whilst every attempt has been made to ensure the accuracy of the floor plan contained here, measurements of doors, windows, rooms and any other items are approximate and no responsibility is taken for any error, omission, or mis-statement. This plan is for illustrative purposes only and should be used as such by any prospective purchaser or tenant. The services, systems and appliances shown have not been tested and no guarantee as to their operability or efficiency can be given.
 Copyright V360 Ltd 2021 | www.houseviz.com



Energy Efficiency Rating		Current	Potential
Very energy efficient - lower running costs			
(92 plus) A			
(81-91) B			
(69-80) C			
(55-68) D			
(39-54) E			
(21-38) F			
(1-20) G			
Not energy efficient - higher running costs			
		70	78
England & Wales		EU Directive 2002/91/EC	

Environmental Impact (CO ₂) Rating		Current	Potential
Very environmentally friendly - lower CO ₂ emissions			
(92 plus) A			
(81-91) B			
(69-80) C			
(55-68) D			
(39-54) E			
(21-38) F			
(1-20) G			
Not environmentally friendly - higher CO ₂ emissions			
England & Wales		EU Directive 2002/91/EC	

339 Chester Road Little Sutton, Ellesmere Port, CH66 3RG | 01513392465
 littlesutton@hunters.com | www.hunters.com



This Hunters business is independently owned and operated by GPM Properties LTD | Registered Address: 339 Chester Road Little Sutton, Ellesmere Port, CH66 3RG | Registered Number: 04749324 England and Wales | VAT No:799600284 with the written consent of Hunters Franchising Limited.